

# FLEET SUPPLY

# Summer Clearance

BEHIND EVERY PROJECT IS A  
**True Value**  
Sale Prices Good  
August 23 thru  
September 1, 2025

YOUR COMPLETE FARM & HOME STORE

www.fleetupplymn.com

4<sup>97</sup>

MASTER MECHANIC

## Master Mechanic® 10' Tie-Down With Cam Buckle

Features a 200-lb. load limit & cambuckle, 10' length. #548576



4<sup>97</sup>

Pet Expert

## Camo/Orange Dog Collar

Medium, camo orange, 2 styles in 1 reversible dog collar, metal buckle, 3/4" x 16-20". #224079



4<sup>97</sup>

True Grip

## Mens Large Cotton Canvas Gloves

Comfortable, pliable knit material, pvc dots provide a non-slip grip for the palm, thumb & forefinger, knit wrist fits snug, 3 pk. large. #242594



5<sup>97</sup>

MASTER

## Master Painter® Paint Brush Pack

Polyester-blend filaments, for all paints & finishes, 3 ct. includes 1" paint brush, 2" paint brush & 1-1/2" angular sash brush. #694622



9<sup>47</sup>

MASTER MECHANIC

## 12 In 1 Folding Multi-tool

Folding multi-tool has bead blast stainless steel, contains 12 different tools. #250135



9<sup>97</sup>

RUFFIN' IT

## 16' Retractable Leash

For dogs up to 65 lbs., comfort grip & easy 1 button control, red or blue. #164384



9<sup>97</sup>

homepointe

## Homepointe® Push Broom

All soft bristles, indoor & outdoor use, 59" steel handle, 24" wide. #129965



9<sup>97</sup>

MASTER MECHANIC

## Master Mechanic® 16' Tape Measure

Nylon coated, heavy duty 1" wide blade, chrome case with black over-mold grip, 16'. #1384353



9<sup>97</sup>

MASTER ELECTRICIAN

## Extension Cord

Green vinyl, 40', 16/3 SJTW-A. #765263



14<sup>97</sup>

Annin

## U.S.A. Flag Pole Kit

Polycotton banner printed stars & stripes, 2.5' x 4', set on 5' wood pole, with 2-way bracket. Made in the U.S.A. #535813



14<sup>97</sup>

ESTWING

## Axe

Double injection fiberglass handle, 2-handed position & textured rubber grip, 4 lb., 36". #108105



29<sup>97</sup>

O-Cedar

## EasyWring Microfiber Spin Mop & Bucket System

Reusable, machine-washable microfiber mop, 99% bacteria removal with just water, effortless, hands-free wringing, foot-activated pedal. #4173522



29<sup>97</sup>

## Heavy Weight Dog Trolley

Galvanized steel aircraft cable, UV protected clear coated vinyl, includes 2 screw eye hooks, 1 spring, 2 rope clips, 1 lexan pulley, 100'. #223860



49<sup>97</sup>

COURTYARD

## Four Seasons Padova™ Bistro Dining Set

Durable steel frames feature black powder coated finish, 3 piece set includes 2 folding chairs & 1 folding bistro table. #270090



49<sup>97</sup>

Vacmaster

## Vacmaster® 5 Gallon Professional Wet/Dry Vacuum

Powerful 3 HP motor for efficient wet & dry clean-ups, convertible design for vacuuming & blowing tasks, compact & mobile with on-board storage. #4505350



49<sup>97</sup> First Alert®

## Fire Extinguisher HD3A/40BC

Heavy duty, 3-A: 40-B:C, rechargeable extinguisher, monoammonium phosphate extinguishing agent, 5 lb., 16" x 4.6", 195 psi, metal valve, metal/steel cylinder. #3363587



55<sup>97</sup>

WINCHESTER

## Winchester 5.56 MM FMJ Ammo

125 ct. #USA193125



79<sup>97</sup>

## 900 Lb. Capacity Hand Truck

P-Shaped handle, 2 solid rubber tires, 1" diameter steel frame, 8" x 18" toe plate. #9276882

ProSource



99<sup>97</sup>

Schumacher

## Schumacher® 50/10/2 Amp Manual Starter/Charger

Fully automatic charger/engine starter, micro processor controlled, great for engine starting, 12V. #SC1361



99<sup>97</sup>

FLOTECH PUMPS

## 3/4 HP Zinc Sump Pump

Vertical float switch, uni-body motor housing & volute, smooth flow hydraulics, quadra seal technology, 8' power cord, fits in 10" or larger basin. #176954



249<sup>97</sup>

DEWALT

## Pole Saw Kit

High-efficiency brushless motor, 4AA 20V, comes with an 8" bar & chain, pole shaft extends up to 10' for a total reach of 15', auto-oiling feature, metal bucking strips for a durable cutting grip & a tree hook. #2309896



249<sup>97</sup> Danby

## 8,000 BTU Window Air Conditioner

Electronic controls with LED display & remote control. Powerful 3-speed fan, 4-way air direction, convenient 24-hour programmable timer, auto restart, thermostat remote control, sleep mode, energy saver switch, reusable washable air filter. #DAC080EE2WDB







**.47**

SHUR-LINE

### Shallow Plastic Tray Liner

Disposable plastic tray liners makes cleanup easier & faster.

#103719



**1.97**

DEWALT

### Socket Adapter

Black oxide coated with patented Impact Ready® design. Fits all 1/4 hex to 1/4 impact drivers, for use with 1/4" sockets.

#2771392



**1.97**

LINCOLN  
ELECTRIC

### Wire Welding Brush

Tempered stainless steel bristles, 4 rows of 16, slender 10-1/4" long wooden-shoe handle, 4" x 16".

#122765



**1.97**

MASTER  
ELECTRONIC

### Brown Household Extension Cord

Brown polarized cube tap household extension cord, vinyl, polarized, 13A, 125V, each connector has a safety cover permanently attached, 9' x 16/2 spt-2. #765651



**1.97**

3M

### Chemical Splash/Impact Protection Goggle

Tough polycarbonate lens design fits over most personal glasses, great peripheral vision, lightweight & comfortable, soft flexible frame, fully adjustable & flame retardant headband. #143686



**4.97**

CLR

### CLR CL-12 Calcium, Lime & Rust Remover

Powerful formula quickly & easily dissolves & removes tough calcium, lime & surface rust stains deposits, 28 oz.

#6571988



**4.97**

MOTOR MEDIC

### Thrust® Starting Fluid

Promotes quicker starting of gasoline & diesel engines under extreme cold conditions down to -65° F, 11 oz. aerosol can.

#9857285



**7.97**

WD-40

### WD-40 Smart Straw Lubricant

Multi-use product lubricates moving parts, protects against rust & corrosion, penetrates to free corroded stuck parts, 12 oz. aerosol can.

#2076115



**9.97**

simple  
green

### Simple Green® All Purpose Cleaner

Powerful, safer, all-purpose cleaner & degreaser, biodegradable formula, 1 gal.

#6974489



**9.97**

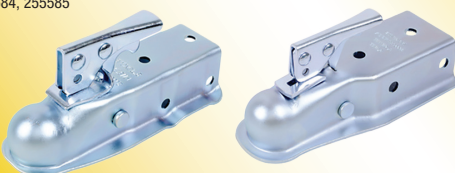
YOUR CHOICE

MASTER  
MECHANIC

### Class I or Class II Tow Coupler

Class I: Zinc finish for enhanced corrosion resistance & durability, fits standard 2" channel, 1-7/8" ball, 2,000 lb. capacity. Class II: Zinc finish for enhanced corrosion resistance & durability, fits standard 3" channel, 2" ball, 3,500 lb. capacity.

#255584, 255585



**9.97**

### Strap With Flat Hook

Flat hook, 5,000-lb. working load, 4" x 30".

#112294

MASTER  
MECHANIC



**9.97**

BLASTER

### Penetrating Lube Catalyst

Quickly busts loose rusted, corroded or frozen parts, contains a non-evaporating lubricant that protects against further rust & corrosion, 18 oz. can.

#7367816



**19.97**

STANLEY

### FATMAX™ Measuring Tape

Measures up to 25', equipped with a strong spring for smooth blade extension & retraction. Cushion grip with slip-resistant hold, multi-catch hook grabs from all sides, BladeArmor® coating on first 4-1/2" ensures durability & reduces blade breakage. 16" & 19-1/5" stud-center markings, top-forward blade lock, high-impact rubber ABS case. #6123012



**19.97**

MASTER  
MECHANIC

### Vehicle Recovery Strap

Abrasion-resistant webbing, stretch & recoil action, recommended for mid-size trucks, working load limit 7,000 lbs., 2" x 20'.

#548873



**19.97**

STANLEY

### Stanley® Fiberglass Tape

Polymer-coated blade, easy-to-read 2-sided blade graphics with fractional inch/decimal foot scales, Tru-Zero® folding end hook, high-impact ABS case with durable rubber grip, 200 ft, 1/2" wide blade.

#6087845



**24.97**

DEWALT

### Black Oxide Drill Bit Set

Metal 20 piece set includes: (3) 1/16", 5/64", (2) 3/32", 7/64", (2) 1/8", 9/64", 5/32", 11/64", 3/16", 13/64 in, 7/32", 15/64", 1/4", 5/16", 3/8", 1/2" bits, tough case container.

#7214398



**39.97**

DEWALT

### Socket Set

Polished chrome vanadium finish, includes: 1-3/8 drive quick release ratchet. (8) 3/8 drive standard SAE sockets: 7/16, 1/2, 9/16, 5/8, 11/16, 3/4, 13/16, 7/8. (1) 3/8 drive, 3" extension, (8) 3/8 drive standard metric sockets 12 to 19, (1) 3/8 to 1/4 drive adaptor, (1) 3/8 drive drill adapter. (7) 1/4 drive standard SAE sockets: 5/32, 3/16, 7/32, 1/4, 9/32, 5/16, 3/8. (7) 1/4 drive standard metric sockets 5 to 11. #7515034



**79.97**

### Rechargeable Max LED Flashlight

Lithium-Ion battery, 11 to 25 hours run time, 20V.

#7208457

DEWALT



**94.97**

BISSELL

### Bissell Cleanview Vac

Engineered with OnePass® technology, powerful suction, innovative brush design cleans on the initial pass. Multi-cyclonic system, multi-level filtration with a washable filter, cyclonic system performance, lightweight design.

#2047173



**129.97**

DEWALT

### Cordless Circular Saw

20V with a 6-1/2" carbide-tipped blade, powerful 5150 rpm motor with a 0 to 50 degree bevel capacity, lightweight & durable magnesium shoe.

#3888617



**149.97**

DEWALT

### Air Inflator

High-pressure inflation mode with automatic shutoff, LED light, onboard accessory storage, threaded chuck for secure connection to inflation valve, high-volume inflation & deflation modes, heavy-duty rubber feet, 20V. #7240799





# Sales & Specials



BEHIND EVERY PROJECT IS A  
**True Value**

**23 - September 1, 2025**



**4<sup>97</sup>**

## Nozzle

Adjustable, metal nozzle, ergonomic handle, chrome body, adjusts from powerful single stream to gentle fan spray. #174487

**4<sup>97</sup>** Your Choice

Sprout

## 8-Pattern Watering Wand

Flow control, 15" reach, blue, green, or red. #108274, 108275, 108276



**4<sup>97</sup>**

Liberty

## Wall Hose Butler

Wall-mount, tough steel ensures durability, keeps hoses neatly out of the way, comes with key slotted holes for easy mounting, holds 125' of garden hose. #184307



**4<sup>97</sup>**

Super S

**Bar & Chain Oil**  
Premium lubricant designed to provide protection under all operating conditions, 1 qt. #114355



**4<sup>97</sup>**

## Wasp Spray

Foaming spray kills wasps & hornets on contact, protects your home & yard for up to four weeks, 17.5 oz. spray can. #6522460



**9<sup>97</sup>** Your Choice

GreenThumb

**Bow Rake, Long-Handled Round-Point Shovel, Fiberglass Long-Handled Round-Point Shovel, Trench Spade, Scraper, Welded Cultivator, Fiberglass Square-Point Shovel, Long-Handled Square-Point Shovel**  
Assorted garden tools, fiberglass or wood handles. #109580, 109588, 109586, 109590, 109593, 109595, 109599, 109600



**9<sup>97</sup>**

## Oscillating Sprinkler

Poly oscillating sprinkler, gear driven motor, tab slide to adjust spray distance, adjustable rectangle spray pattern, built-in rain gauge, 3,600 sq. ft. coverage. #110427



**9<sup>97</sup>**

GreenThumb

## Pulsating Impulse Spike Sprinkler

Full or partial coverage up to 5,800 sq. ft., impulse arm saves water, easy water stream diffuser adjustment screw, long-lasting brass & zinc construction on impulse head, heavy-duty, die cast zinc, tri-spike base. #539476



**14<sup>97</sup>**

## Lopper

High carbon steel blades, onyx coating, 1.25" cutting capacity, soft-grip handles, performance design, 16". #109700



**14<sup>97</sup>**

FUSION

## Solar Stake Lights

Water glass lens, features durable plastic construction with a stainless-look plastic finish, 4 pack. #113894



**14<sup>97</sup>**

## Charcoal & Hickory Barbecue Pellets

Made from 100% all-natural ingredients with no additives, blend of 75% hickory & 25% charcoal for authentic flavor, 20 lb. bag. #272363



**19<sup>97</sup>**

## Leaf Rake

Effectively removes thatch, secure, durable design, smooth raking action, 22 steel tines, ash wood handle. #7006075



**19<sup>97</sup>**

## Fruit Harvester

Colorful, vinyl-coated head, heavy wire construction, cushion prevents bruising, 2-piece, 8' wood handle. #575894



**249<sup>97</sup>**

## Bighorn Ranch Fire Pit With Grill

Heavy-duty expanded metal cooking grate, 29" bowl, heavy-gauge legs, outside safety ring around edge of pit. #227766



**19<sup>97</sup>**

## Club Chair With Cup Holder

Folds for easy storage, no storage bag needed, rear snap clips the chair closed, includes cupholder. #121263



**199<sup>97</sup>**

## Broadcast Spreader

Easy set controls, extra-large poly hopper, 25,000 sq. ft. coverage area, 12" wide spread, tow behind, 130 lbs. #9068578



COUPON

## All Chain Saws

**\$25 off**

Regular Price In Stock Only



Fleet Supply  
BEHIND EVERY PROJECT IS A  
**True Value**

Coupon good at Fleet Supply Sauk Centre, Long Prairie, Little Falls, Paynesville, Glenwood, Glencoe and Faribault. Limited to stock on hand. Not valid with any other offer. Excludes sale items. Expires September 1, 2025.

COUPON

## All Grass Seed & Lawn Fertilizer

**25% off**

Regular Price In Stock Only



Fleet Supply  
BEHIND EVERY PROJECT IS A  
**True Value**

Coupon good at Fleet Supply Sauk Centre, Long Prairie, Little Falls, Paynesville, Glenwood, Glencoe and Faribault. Limited to stock on hand. Not valid with any other offer. Excludes sale items. Expires September 1, 2025.

COUPON

## All Patio Furniture & Accessories

**25% off**

Regular Price In Stock Only



Fleet Supply  
BEHIND EVERY PROJECT IS A  
**True Value**

Coupon good at Fleet Supply Sauk Centre, Long Prairie, Little Falls, Paynesville, Glenwood, Glencoe and Faribault. Limited to stock on hand. Not valid with any other offer. Excludes sale items. Expires September 1, 2025.



**Sale Prices Good**  
**August 23 thru**  
**September 1, 2025**

# Summer Clearance

BEHIND EVERY PROJECT IS A  
**True Value**

**True Value**

**BARGAINS**

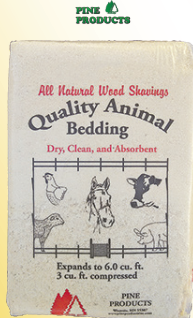
**287**

**Shur-tred Coarse Barn Lime**  
 Non-sliping, keeps barn floors & gutters clean, dry & sweet.  
 #1024060



**557**

**Fine Pine Shavings**  
 Covers 60 cu. ft., compressed to 3 cu. ft. bag.  
 #FINEPINE



**587**

**Medium Pine Shavings**  
 Covers 60 cu. ft., compressed to 3 cu. ft. bag.  
 #MEDPINE



**797**

**Zimecterin® Horse Dewormer**  
 Controls a broad spectrum of worms & bots. Also controls summer sores caused by Habronema & Draschia, approved by the FDA to eliminate many species & stages of parasites. Treats 1250 lb. body weight, 0.21 oz. #030058



**847**

**Whole Corn**  
 50 lb. bag.  
 #91850



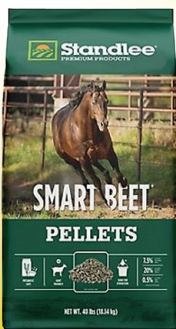
**897**

**Cracked Corn**  
 50 lb. bag.  
 #91868



**1497**

**Premium Western Forage Smart Beet Pellets**  
 40 lb. bag. #17003010100



**1497**

**Manure Fork**  
 Wood handle, 5-tines, 10" long.  
 #109597



**1497**

**Simply Sweet 12% Horse Feed**  
 For general maintenance, 50 lb. bag.  
 #9079



**1497**

**Pro Series Spiderweb Fly Glue Trap**  
 Environmentally friendly - reduces pesticide use, non-toxic & disposable, no mess, 30 ft.  
 #931



**2497**

**Orange Plastic Twine**  
 20,000 ft. #P20000



**4397**

**7200 Sisal Baler Twine**  
 Natural fibers grip tightly for exceptional knot strength, treated to resist rot mildew rodents & insects, biodegradable, 7200'. #7200



**1697**

**Black Oil Sunflower Bird Seed**  
 40 lb. bag.  
 #B110040

Glacial Plains



**1997**

**Post Hole Digger**  
 Atlas-patterned long wood handle, ideal for digging precise holes.  
 #109585



**4497**

**9000 Sisal Baler Twine**  
 Made from the fibers of the sisal plant (Agave Sisalana), exceptional knot strength, treated to resist rot mildew, rodents & insects, biodegradable, 9000'. #9000



**2897**

**Compressed Timothy Grass Forage Bale**  
 50 lb. bag. #12002002100



**2997** Your Choice

**Purina Beef or Chicken Dog Chow**  
 High-quality protein, 100% complete & balanced dog kibble contains 23 essential vitamins & minerals, 44 lb. bag.  
 #17830, 20015815



**2997**

**Orange Plastic Baler Twine**  
 9,000 ft. #P9000



**4797**

**16000 Sisal Baler Twine**  
 Extra-long fibers for consistent uniformity for true length, high strength, specially treated to resist rodents & insects. #16000



**4997**

**Wheelbarrow**  
 Medium-duty poly, wood handles, 4" x 16", 4-ply pneumatic wheel, 5 cu. ft. tub. #274223



**19997**

**Farm & Ranch Wheeled Charger**  
 Fully automatic battery charger with rugged 6" wheels. Provides 250 amp engine start, 125 amp boost, & 50 amp/2 amp charge/maintain rates. Microprocessor controlled. Powerful enough for starting SUVs, trucks, & large batteries.  
 #FR01336



**34997**

**Belt-Drive Barrel Fan**  
 Great for warehouses & larger areas, all metal construction, solid wheels, quiet belt-drive operation, 48" high.  
 #123415



# FLEET SUPPLY

YOUR COMPLETE FARM & HOME STORE

[www.fleetupplymn.com](http://www.fleetupplymn.com)

**SAUK CENTRE**  
 1050 Centre St.  
 320-352-5261

**LONG PRAIRIE**  
 Hwy. 71 South  
 320-732-6195

**LITTLE FALLS**  
 1800 1st Ave. NE.  
 320-632-9240

**PAYNESVILLE**  
 Hwy. 55 West  
 320-243-3556

**GLENWOOD**  
 Hwy. 28 & 55 • 320-634-5209

**GLENCOE**  
 Hwy 212- 3105 10th St. E. • 320-864-4304

**FARIBAULT**  
 80 Western Ave. • 507-334-3232

Hours: Monday-Friday 8:00am-7:00pm; Saturday 8:00am-6:00pm; Sunday 10:00am-4:00pm  
 Little Falls: Monday-Saturday 8:00am-8:00pm; Sunday 9:00am-5:00pm  
 Faribault: Monday-Friday 7:00am-7:00pm; Saturday 8:00am-6:00pm; Sunday 10:00am-4:00pm



Not responsible for printing errors. Prices subject to change without notice. Quantity limited to stock on hand. Brand substitution may apply for equal value. Some items have rain check available. We will special order items not in stock, if available.